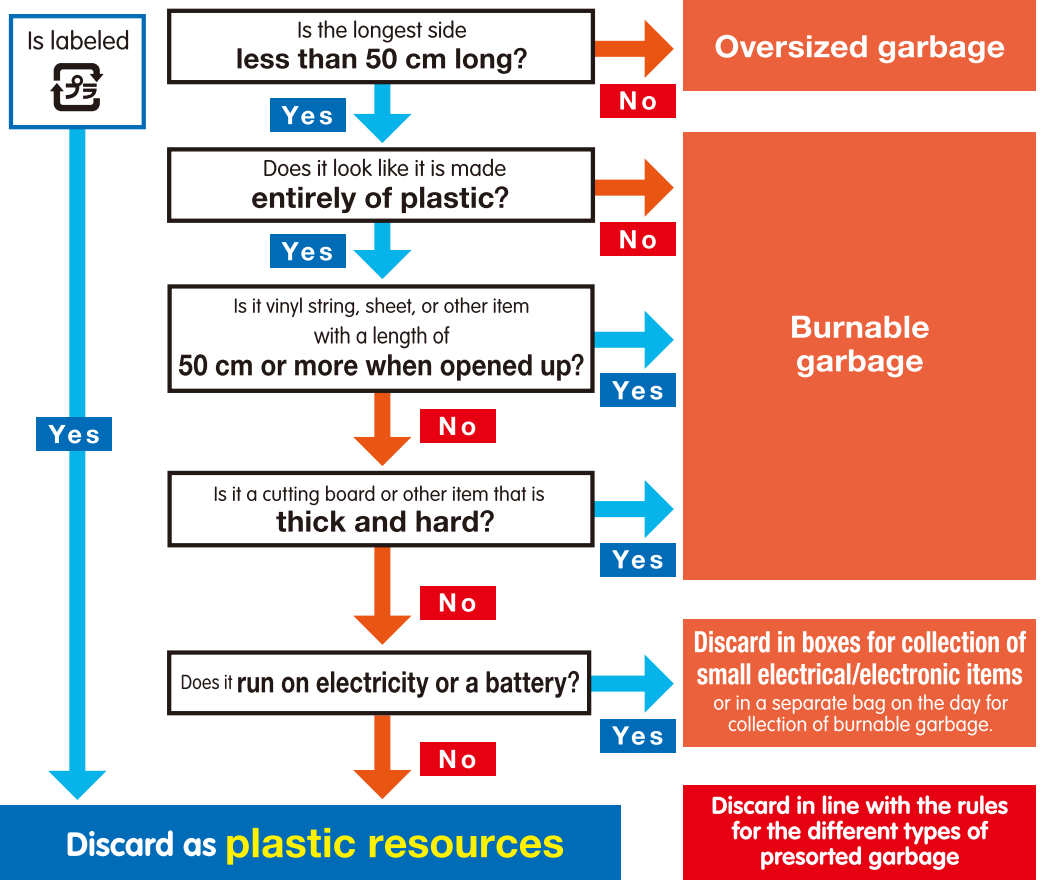


You won't make any mistakes if you check this table! /

# Distinguishing types of plastic resources



If you are unclear about how to discard garbage, check here.

[How to discard plastic resources in Yokohama](#)

- |                                  |  |                            |                           |                         |
|----------------------------------|--|----------------------------|---------------------------|-------------------------|
| Places to contact with inquiries | Tsurumi Office ☎ 502-5383  | Konan Office ☎ 832-0135    | Kohoku Office ☎ 541-1220  | Sakae Office ☎ 891-9200 |
|                                  | Kanagawa Office ☎ 441-0871   | Hodogaya Office ☎ 742-3715 | Midori Office ☎ 983-7611  | Izumi Office ☎ 803-5191 |
|                                  | Nishi Office ☎ 241-9773  | Asahi Office ☎ 953-4811    | Aoba Office ☎ 975-0025    | Seya Office ☎ 364-0561  |
|                                  | Naka Office ☎ 621-6952   | Isogo Office ☎ 761-5331    | Tsuzuki Office ☎ 941-7914 |                         |
|                                  | Minami Office ☎ 741-3077   | Kanazawa Office ☎ 781-3375 | Totsuka Office ☎ 824-2580 |                         |
|                                  | Please contact the garbage collection office in the resources & waste recycling bureau of your ward. |                            |                           |                         |

3R Promotion Division, Resources & Waste Recycling Bureau, City of Yokohama Prepared in January 2024 ☎ 671-3593 ✉ sj-3rsuishin@city.yokohama.jp

## Notice from City of Yokohama

# We are changing the rules for discarding plastic waste

The change will start at different times, depending on the ward of residence.

**Starting in Oct. 2024** The wards of Asahi, Isogo, Izumi, Kanazawa, Konan, Sakae, Seya, Totsuka, and Naka

**Starting in Apr. 2025** All 18 wards in the city

## Items discarded on the day for collection of plastic resources

The day for collection of plastic containers and packaging will become the day for collection of plastic resources.

**NEW Plastic products**

Items made **entirely** of plastic

**Plastic containers and packaging**

This mark indicates plastic.

You can discard plastic waste items by putting all of them into a single bag.

**Recycling plastic instead of incinerating it.** Target

A yearly reduction of 5.3 kilograms per person in the amount of plastic included in combustible garbage (for a reduction of about 20,000 tons in the city as a whole)

With the effectuation of the Plastic Resource Circulation Act, people will be able to recycle plastic products in the same way as plastic containers and packaging. This change in the items for presorting is aimed at reducing emissions of greenhouse gases accompanying incineration of plastic. We intend to take the initiative in building a carbon-free society, beginning with the things we can do right now. We are counting on your cooperation with these efforts.

# How to discard **plastic resources** (plastic containers & packaging, and plastic products)

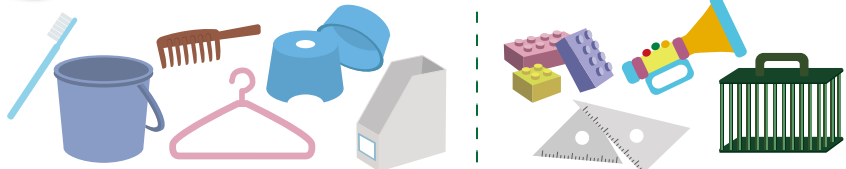
For details on discarding garbage, check here.



## Items that can be discarded as **plastic resources**

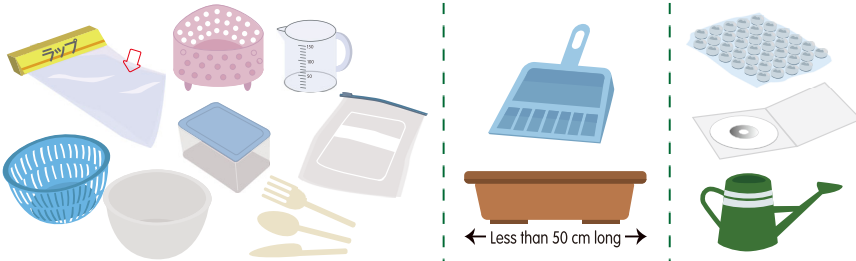
### **NEW** Plastic products

Items whose longest side is **less than 50 centimeters long**, that are made **entirely of plastic**



Storage products, bath & lavatory items, etc.

Stationary, toys etc.



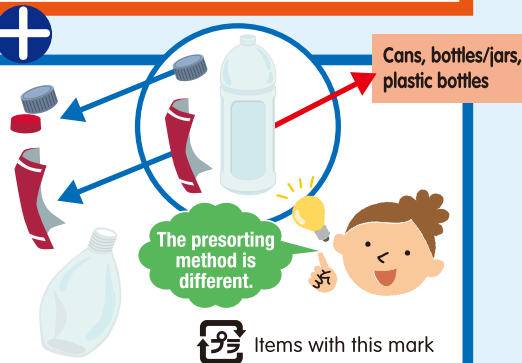
Cooking items, kitchen items

Outdoor items

Other items (CD cases, buffer materials, etc.)

← Less than 50 cm long →

### Plastic containers & packaging



### How to discard dirtied plastic

**Rinse dirtied plastic lightly with water** to remove any solids, and discard along with **plastic resources**

## Things not to discard as plastic resources

**Do not discard** the following items as plastic resources, because they can impede recycling

Items containing materials other than plastic



Cutting boards and other thick and hard items



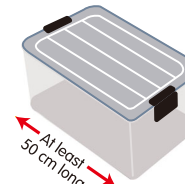
Vinyl string, sheet, or other item with a length of 50 cm or more when opened up



These items can get tangled up in or otherwise disrupt the machinery used in the recycling process, and stop the operation!

Discard as combustible garbage

Items whose longest side is at least 50 cm long



Discard as oversized garbage

Small electrical appliances (items that run on electricity or batteries)



Discard in boxes for collection of small electrical/electronic items or in a separate bag on the day for collection of combustible garbage.



The built-in lithium-ion batteries can cause fires in garbage trucks

## The process from arrival of the collected **plastic resources** to their recycling

- STEP 1** Use of a bag-breaking machine to break bags and remove their contents
- STEP 2** Sorting (by hand) to extract only plastic resources
- STEP 3** Rebirth as recycled products



Intermediate processing facility (breaking of bags, removal of foreign substances, compression, and crating)

Recycling facility